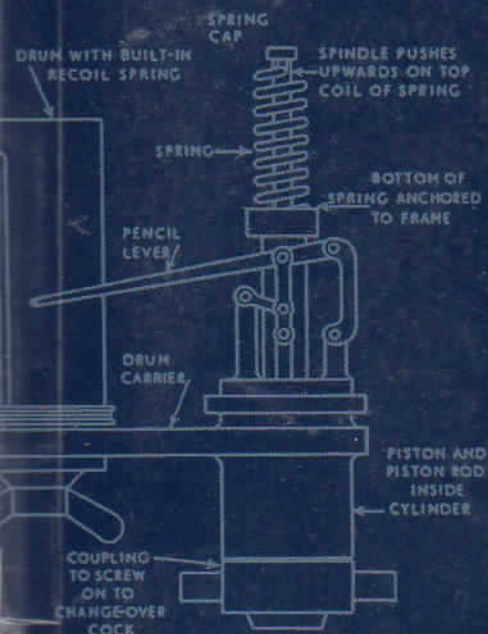


3



**APPLIED
HEAT
FOR
ENGINEERS**

CONTENTS

	PAGE
CHAPTER 1 - UNITS AND COMMON TERMS Mass, force, work, power, energy, efficiency. Pressure, gauge, absolute. Volume. Temperature, absolute temperature. Volume - flow and swept (stroke). Mass flow. System - nonflow and steady flow processes.	1-11
CHAPTER 2 - HEAT Specific heat. Mechanical equivalent. Water equivalent. Latent heat, fusion, evaporation. Sensible heat. Enthalpy.	12-19
CHAPTER 3 - THERMAL EXPANSION Expansion of metals. Linear, superficial, cubical expansion. Expansion of liquids. Apparent cubical expansion. Restricted thermal expansion.....	20-27
CHAPTER 4 - HEAT TRANSFER Conduction. Thermal conductivity. Composite wall. Cylindrical wall. Convection. Radiation, Stefan-Boltzmann law. Combined modes. Fluid, wall, fluid-surface heat transfer coefficient. Overall heat transfer coefficient. Heat exchangers. Logarithmic mean temperature difference.	28-42
CHAPTER 5 - LAWS OF PERFECT GASES Boyle's law. Charles' law. Combination. Characteristic equation. Gas constant. Avogadro's law. Dalton's law of partial pressures. Partial volumes. Specific heats of gases. Energy equation, closed systems. Ratio of specific heats. Enthalpy. Energy equation, open systems.	43-61

	PAGE
CHAPTER 6 - EXPANSION AND COMPRESSION OF PERFECT GASES Isothermal, adiabatic, polytropic closed system processes. Relationships between pressure, temperature and volume. Work transfer. A relationship between heat energy supplied and work done	62-81
CHAPTER 7 - I.C. ENGINES, ELEMENTARY PRINCIPLES Cycles of operation, four-stroke and two-stroke diesel engines. Timing diagrams. Indicator diagrams. Petrol engines. Engine indicator. Mean effective pressure. Indicated and brake power. Mechanical efficiency. Morse test. Thermal efficiency. Heat balance. Clearance and stroke volume.	82-103
CHAPTER 8 - IDEAL CYCLES Constant volume, diesel, dual-combustion, Carnot. Reversed Carnot. Other ideal cycles. Mean effective pressure. Non-ideal cycles.	104-122
CHAPTER 9 - RECIPROCATING AIR COMPRESSORS Work done per cycle. Effect of clearance. Multi-stage compression. Free air delivery. Minimum work.	123-138
CHAPTER 10 - STEAM Saturated steam, dry, wet. Dryness fraction. Superheated steam. Enthalpy. Steam tables. Mixing steam and water. Effect of throttling. Throttling and separating calorimeters. Air in condensers. Humidity.	139-160

	PAGE
CHAPTER 11 – ENTROPY (CLASS ONE ONLY)	
Entropy of water, evaporation, superheated steam. Temperature–entropy ($T-s$) diagram and chart for steam. Isothermal and isentropic processes. $T-s$ diagram for gases. Enthalpy–entropy ($h-s$) chart for steam, etc.	161–172
CHAPTER 12 – TURBINES	
Impulse and reaction. Nozzles. Velocity diagrams. Force on blades, power. Ideal cycles, Carnot and Rankine. Superheat and re-heat. Actual steam cycles. Thermal efficiency. Gas turbine cycles.....	173–204
CHAPTER 13 – BOILERS AND COMBUSTION	
Capacity and equivalent evaporation. Efficiency. Feed water. Principles of combustion. Calorific value, higher and lower. Air required for combustion. Composition of flue gases. Orsat apparatus. Conversion of gas analyses. Hydrocarbon fuels. Incomplete combustion.....	205–222
CHAPTER 14 – REFRIGERATION	
Refrigerants. Working cycle vapour-compression system. Capacity and performance. Coefficient of performance. ...	223–234
SOLUTIONS TO TEST EXAMPLES	235–310
SELECTION OF EXAMINATION QUESTIONS – CLASS TWO	311–319
SOLUTIONS TO EXAMINATION QUESTIONS – CLASS TWO	320–344
SELECTION OF EXAMINATION QUESTIONS – CLASS ONE	345–355
SOLUTIONS TO EXAMINATION QUESTIONS – CLASS ONE	356–396
INDEX.....	397

INDEX

- A
Absolute pressure 5, 43
Absolute temperature 8, 46
Absolute zero 8
Accelerating force 1
Adiabatic processes 62, 643
- Air composition 210
Air compressors 123
Air delivery 135
Air in condensers 52, 157
Air standard efficiency 104
Ammonia 224
Atmospheric pressure 5
Atomic weights 211
Avogadro's law 50
- B
Balancing combustion equations 219
Bar 4
Barometer 5
Black body 35
Blade force 187
Boiler capacity 205
Boiler efficiency 206
Boiling 16
Boiling points 7, 139
Boundary 9
Boyle's law 44
Brake power 92
- C
Calorific value 96, 212
Calorimeter, combined 156
Calorimeter, separating 156
Calorimeter, throttling 154
Capacity, boiler 205
Capacity, refrigeration 229
Carbon 211
Carbon balance 219
Carbon dioxide 212, 223
Carbon monoxide 212
Carnot cycle 115, 169
Celsius 7
Characteristic equation 48
Charles' law 46
Chemical equations 212
Clearance volume 9, 99
Closed system 9
Coefficients, heat transfer 36
Coefficients, expansion 20
Coefficient, friction 13
Coefficient, performance 229
Combined calorimeter 156
Combined modes, heat transfer 36
Combustion 210
Composite wall 30
Composition flue gases 214
Compounds 210
Compression, adiabatic 62
Compression, ignition 82
Compression, isothermal 62
Compression, polytropic 63
Compression ratio 68, 85, 114
Compressors, air 124
Conduction 28
Conductivity 28
Constant, gas 48
Constant-pressure cycle 109, 197
Constant-volume cycle 105
Convection 34
Conversion, gas analyses 216, 218
Cooling effect 227
Critical temperature 223
Cubical expansion 22
Cycle 10
Cycle, Carnot 115, 169
Cycle, constant pressure 109, 197
Cycle, constant volume 105
Cycle, diesel 109
Cycle, dual-combustion 113
Cycle, four-stroke 82
Cycle, gas turbine 197
Cycle, Joule 197
Cycle, Otto 105
Cycle, Rankine 191
Cycle, refrigeration 224
Cycle, re-heat 193
Cycle, two-stroke 85
Cylindrical wall 32

D

- Dalton's law 51
- Degree of superheat 140
- Density 7, 207
- Diagram, efficiency 188
- Diesel cycle 109
- Dryness fraction 139
- Dry saturated steam 139
- Dual combustion cycle 113

E

- Efficiency, air standard 104
- Efficiency, boiler 206
- Efficiency, Carnot 115, 169
- Efficiency, constant pressure 197
- Efficiency, constant volume 105
- Efficiency, diesel 109
- Efficiency, dual combustion 113
- Efficiency, Joule 197
- Efficiency, mechanical 92
- Efficiency, Otto 105
- Efficiency, Rankine 192
- Efficiency, thermal 96, 196
- Efficiency, volumetric 127
- Elasticity 25
- Elements 210
- Emissivity 35
- Energy 2
- Energy equations 55, 57
- Energy, internal 55, 140
- Engine cycles 104
- Enthalpy 57
- Enthalpy-entropy chart 171
- Entropy 161
- Equivalent evaporation 205
- Evaporation 16
- Expansion, adiabatic 64
- Expansion, cubical 22
- Expansion, gases 62
- Expansion, isothermal 64
- Expansion, linear 20
- Expansion, liquid 24
- Expansion, polytropic 64
- Expansion ratio 68
- Expansion, superficial 21
- Expansion, volumetric 22

F

- Feed water 207
- Fixed points 7
- Flue gases 214
- Fluid, heat transfer 36
- Force 1
- Force of gravity 1
- Force on blades 187
- Formation of steam 140
- Four-stroke 82
- Free air delivery 135
- Freon 227
- Friction power 92
- Fuel combustion 210
- Fusion 16

G

- Gas analyses, conversion 216, 218
- Gas constant 48
- Gas constant universal 50
- Gas laws 43
- Gas power cycles 104
- Gas specific heats 53
- Gas turbine cycles 197
- Gauge pressure 5
- Gravity 1

H

- Heat 12
- Heat balance 99
- Heat conduction 28
- Heat convection 34
- Heat exchanger 38
- Heat, latent 16
- Heat, mechanical equivalent 13
- Heat pumps 232
- Heat, radiation 35
- Heat, sensible 17
- Heat, specific 12
- Heat transfer 28
- Heat transfer coefficient, overall 37
- Heat transfer coefficient, surface 36
- Heat transfer, combined modes 36
- Heat unit 12
- Higher calorific value 214
- Humidity 158
- Hydrocarbon fuels 218
- Hydrogen 211

- I
Ice point 7
Ideal cycles 104, 191
Ignition 82
Impulse turbine 173
Incomplete combustion 219
Indicated power 89
Indicator 88
Indicator diagram 84, 87, 89
Intercooler 132
Internal combustion engines 82
Internal energy 55, 140
Isentropic efficiency 194
Isentropic process 167
Isothermal 62, 64
Isothermal efficiency 135
Isothermal process 167
- J
Joule 2
Joule cycle 197
Joule's law 55
- K
Kelvin 8
Kilogramme 1
Kilojoule 2
Kilowatt 2
Kilowatt-hour 2
- L
Latent heat 16
Law, Avogadro's 50
Law, Boyle's 44
Law, Charles' 46
Law, Dalton's 51
Law, Joules' 55
Law, partial pressures 51
Law, Stefan Boltzmann 35
Law, thermodynamics 56
Law of gases 43
Light oil engines 85
Linear expansion 20
Litre 6
Logarithmic mean temperature difference 38
Lower calorific value 214
Lower fixed point 7
- M
Manometer 4
Mass 1
Mass analysis 215
Mass flow 9
Mean effective pressure 88
Mean temperature difference, logarithmic 38
Mechanical efficiency 92
Mechanical equivalent 13
Megagramme 1
Megajoule 2
Megawatt 2
Melting 16
Mercury thermometer 17
Millibar 5
Millilitre 7
Minimum work 135
Mixing steam and water 147
Modulus of elasticity 25
Mol 50
Molecular weight 211
Morse test 94
- N
Newton 1
Nitrogen 211
Non-flow process 9, 55
Non-ideal cycles 119
Nozzles 177
- O
Open system 9
Orsat apparatus 216
Other ideal cycles 118
Otto cycle 105
Overall heat transfer coefficient 37
Oxygen 211
- P
Partial pressures 51, 157
Partial volumes 52
Parts per million 208
Performance coefficient 229
Petrol engines 85
Polytropic processes 63, 64
Power 2, 88, 187
Power, brake 92
Power, cycles 104

- Power, friction 92
Power, indicated 89
Power, shaft 92
Pressure 4
Pressure, absolute 5
Pressure, atmospheric 6
Pressure, mean effective 88
Pressures, partial 51, 157
Pressure ratio, critical 180
Products of combustion 215
- Q
Quality of steam 139
- R
Radiation 35
Rankine cycle 191
Rankine efficiency 192
Ratio of compression 68, 85, 114
Reaction turbine 177
Reciprocating engines 82
Reciprocating air compressors 123
Reducing valve 151
Refrigerating effect 227
Refrigeration 223
Refrigeration circuit 225
Re-heat cycle 193
Relationship pVT 69
Relationship spec. heats 56
Relationship work heat 78
Reversed Carnot cycle 117, 229
Rope brake 93
- S
Saturated steam 140
Sensible heat 17
Separating calorimeter 156
Shaft power 92
Specific fuel consumption 96
Specific heat 16
Specific heat relationship 56
Specific volume 7
Steady-flow process 9, 58
Steam 140
Steam, dryness fraction 139
Steam, entropy of 161
Steam point 7
Steam tables 141
Steam throttling 151
- Stefan-Boltzmann law 35
Stoichiometry 211
Strain 25
Stress 24
Stroke volume 9
Sulphur 211
Superficial expansion 21
Superheated steam 144
Surface heat transfer coefficient 36
Surroundings 9
Swept volume 9
System 9
- T
Tables, entropy 162
Tables, steam 141
Temperature 7
Temperature absolute 8
Temperature conversion 8
Temperature-entropy chart 165
Temperature-entropy diagram 163
Temperature thermodynamic 8
Test, Morse 94
Thermal conductivity 28
Thermal efficiency 96
Thermal expansion 20
Thermometer 7
Throttling calorimeter 154
Throttling steam 151
Timing diagram 84, 87
Transfer of heat 28
Transfer of work 72
 $T-s$ diagrams 163
Turbines, impulse 173
Turbines, reaction 177
Two-stroke 85
- U
Units 1
Universal gas constant 50
Upper fixed point 7
- V
Vacuum gauge 6
Valve, reducing 151
Vapour-compression 224
Vapour power cycles 104
Velocity compounding 174, 185
Velocity diagrams 182, 189

Volume 6
Volume, clearance 9, 99
Volume, flow 8
Volume, stroke 9
Volumes, partial 52
Volumetric analysis 216
Volumetric efficiency 127
Volumetric expansion 22

W
Water, entropy of 161
Water equivalent 14
Watt 2
Weight 1
Weight, atomic 211
Weight, molecular 211
Wet steam 139
Work 2
Work transfer 72